

Advanced Aircraft Analysis 5.0

Network Floating License Upgrade Installation

1 Introduction

DARcorporation uses the Wibu-Systems WibuKey Copy Protection for the AAA network licensing. The WibuKey consists of a Universal Serial Bus (USB) WibuBox and the Wibu software.

A WibuBox does not need to be attached to the local computer where AAA is started. The protection in a network is handled centrally by a WibuBox on a computer called the AAA License Server (or WibuKey server). All computers running AAA must be able to access the license server. AAA uses the license server WkLAN (WKS VW32.EXE). On Windows 7/8/8.1/10/11 this server can be started as a system service or as an application.

The AAA License Server is a computer with the WIBU software installed and is additionally running the WibuKey server process WkLAN. WkLAN is protocol based (currently TCP/IP), so it requires TCP/IP support of the network and a proper installation of TCP/IP on the server and all client machines. The client machine is a computer on which AAA runs.

The number of licenses can be increased or decreased in a simple fashion by contacting DARcorporation. No new hardware is needed; a file can be exchanged via Internet, e-mail or disk to modify the WibuBox contents.

We recommend reading through this complete document first and then following the installation steps of Section 2.

2 Install Procedure

You must have administrative rights to complete the following steps. Installing the software with floating licenses on a network consists of the following steps:

- STEP 1 Close any programs that are running on the computer where the software is being installed.
- STEP 2 If you were provided with a download link for AAA installer, click on it to download and save it. Right-click on the installer to select **Run as administrator** and follow the instructions on the screen from the installation program. It is strongly suggested that the program be installed in the recommended directory. Proceed to Step 6 to continue.
- STEP 3 Insert CD into the CD-ROM drive.
- STEP 4 If the installation does not start automatically: select run from the Start Menu. In the Run dialog, type: X:\setup (where X is the letter of the CD-ROM drive) and click **OK**. Figure 2.1 shows the setup window.



Figure 2.1 AAA Setup Window

STEP 5 Click on “Install AAA” to install AAA first. Follow the instructions on the screen from the installation program. It is strongly suggested that the program be installed in the recommended directory.

STEP 6 Start AAA 5.0 after the installation is completed. A message will show up indicating the WibuBox is for a previous version. You can download an updated wibukey.rtu file from the www.darcorp.com website automatically (see Figure 2.2) or obtain one through support@darcorp.com if your computer is not connected to the Internet. Save this file to a temporary location.

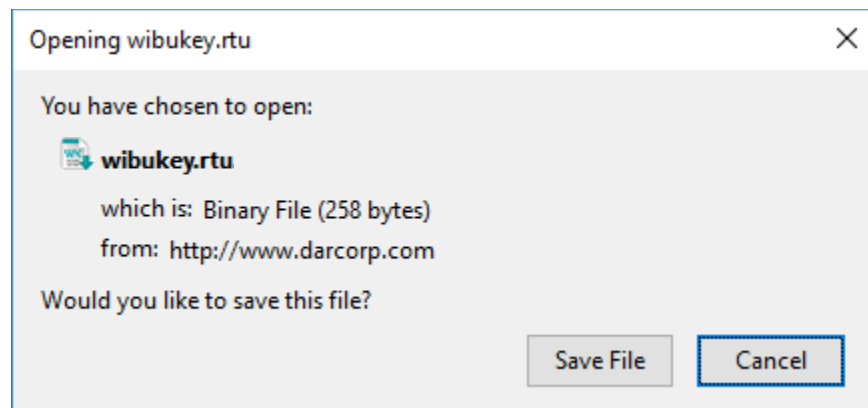


Figure 2.2 Download rtu File

STEP 6 Exit AAA 5.0

STEP 7 On the computer running the AAA 4.0 (or any previous version of AAA) license server, stop the license server.

STEP 8 Double-click on the saved wibukey.rtu file saved in Step 5. A message will ask if you want to transfer the file content to the WibuKey (see Figure 2.3).

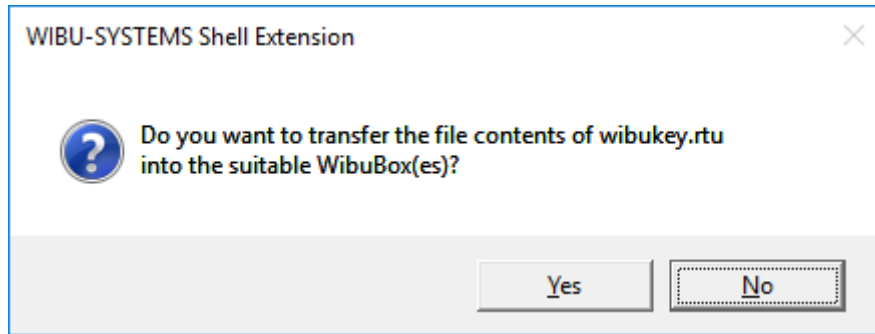


Figure 2.3 WibuKey Update Prompt

STEP 9 Click on the Yes button. A message will show up indicating the update was successful (see Figure 2.4).

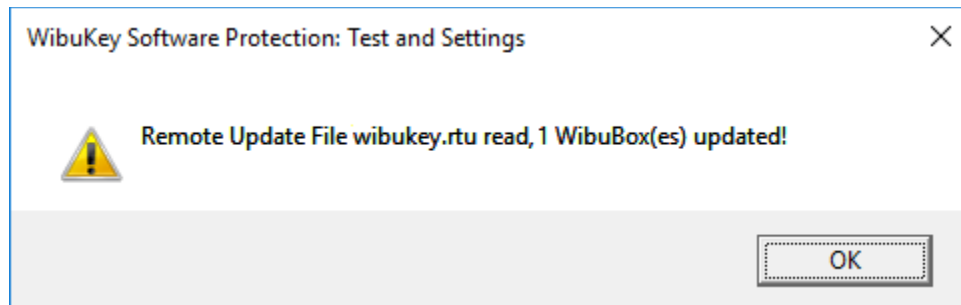


Figure 2.4 WibuKey Remote Update

If the update was not successful, please follow the instructions found on this link: <https://tinyurl.com/3tydn4cr> and contact support@darcorp.com.

STEP 10 Install the AAA and the Wibu Drivers/Software on each computer on the network. For Windows operating systems, Microsoft patches for the Help program are needed because the Help program is not included as a feature for Windows. The patches are included on the installation CD in a folder named Patches or they can be downloaded from:

- Windows 10/11: Locate winhlp32-windows.zip on the installation CD or download it (<https://www.darcorp.com/wp-content/uploads/2018/10/winhlp32-windows-1.zip>) and in there are three files (install.cmd, winhlp32.exe and winhlp32.exe.mui). Unzip the files to a local folder of your choice. Right-click on

install.cmd and select Run as administrator. The install batch file should install the needed winhlp32.exe to your operating system. If you get an error message of problem running the macro (1037) when using AAA Help, go to Microsoft Support Page <http://support.microsoft.com/kb/917607> and follow the instructions given under Manually enable macros on a single computer.

- Windows 8.1: Run WinHlp32 patch on the installation CD or download it from <http://www.microsoft.com/en-us/download/details.aspx?id=40899>. If you get an error message of problem running the macro (1037) when using AAA Help, go to Microsoft Support Page <http://support.microsoft.com/kb/917607> and follow the instructions given under Manually enable macros on a single computer.
- Windows 8: Run WinHlp32 patch on the installation CD or download it from <http://www.microsoft.com/en-us/download/details.aspx?id=35449>. If you get an error message of problem running the macro (1037) when using AAA Help, go to Microsoft Support Page <http://support.microsoft.com/kb/917607> and follow the instructions given under Manually enable macros on a single computer.

STEP 11 Start the Network Server only on the AAA license server (not on a client) by selecting:

Windows Start > WibuKey > Network Server

On Windows 7/8/8.1/10/11 the server software can be installed as a service instead of running as a user program. It will start up automatically after rebooting the computer. If you run the server as an application you can pin it to the taskbar by right clicking on the icon and select Pin to taskbar after you have started the server.

STEP 12 Start AAA on any computer in the network. A window will show up when the connection to the license server is successful (see Figure 2.6).

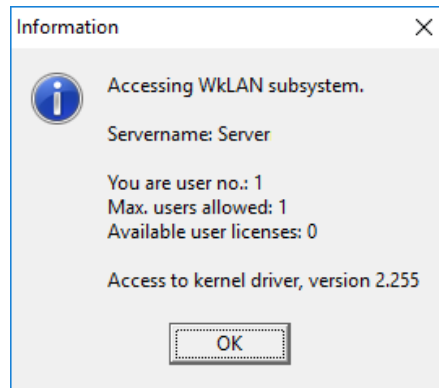


Figure 2.6 AAA Startup Screen

This window shows the name of the license server, how many users have connected and how many available licenses there are. After clicking OK, AAA will open.

Note: AAA uses a working directory to create temporary working files. This directory is normally C:\Users\LoginName\AppData\Local\Temp\working. To use another directory other than the default, change the shortcut to AAA on the Desktop from:

aaa50.exe to aaa50.exe "%1" "new working directory location\working"

Be sure to include the %1 and to include the directory name working.

STEP 13 When AAA is started for the first time, the dialog window in Figure 2.7, along with the online Registration Form on www.darcop.com in a web browser, will be displayed requesting information used to set up the software configuration.

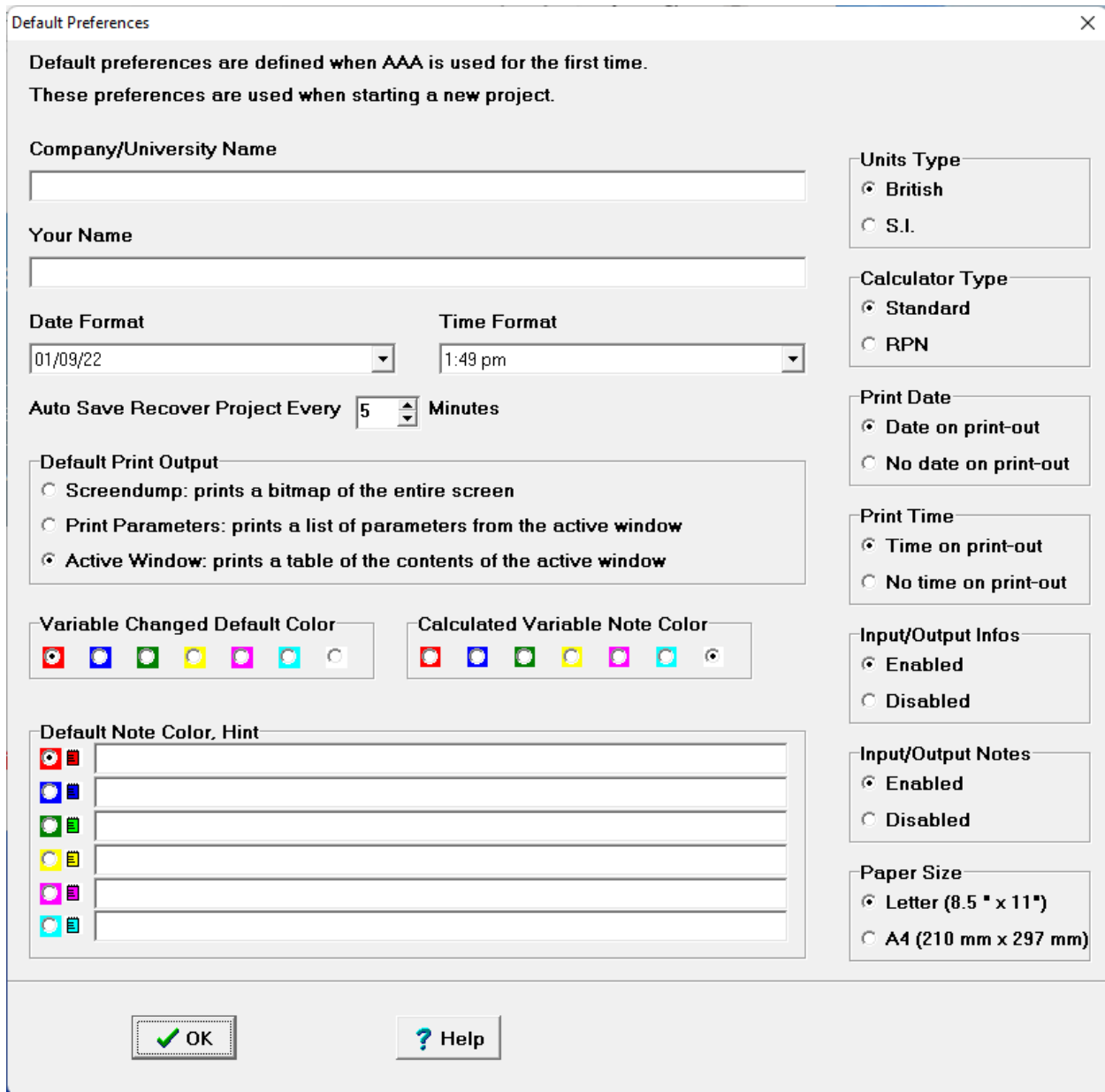


Figure 2.7 Program Options Window

The following information is requested:

- **Company name:** This name will be displayed in the statusbar while running the software.
- **Your Name:** The name will be saved in the software configuration file.
- **Date Format:** Default format of date displayed on statusbar.
- **Time Format:** Default format of time displayed on statusbar.
- **Units Type:** The software supports both S.I. and British units.
- **Calculator Type:** The software calculator supports standard and RPN mode.
- **Print Date:** The date can be displayed on each printout.
- **Input/Output Infos:** A button can be displayed on each input/output element allowing the user to directly access help about that info. Default is 'enabled'.
- **Input/Output Notes:** A button can be displayed on each input/output element allowing the user to keep notes about the parameter. Default is 'enabled'.
- **Print Time:** The print time can be displayed on each printout.
- **Paper Size:** Specify the paper size for printouts.
- **Auto Save Recovery:** Specify the time interval for auto save.
- **Variable Change Color:** Specify the default color to display with calculated values change.
- **Default Note Color:** Specify the color of a note, and a description of what the note color represents.
- **Default Printer Output:** The default hardcopy output type can be defined (see AAA 5.0 User's Manual, Part I, Chapter 4).

3 WibuKey Software



When the WibuKey Setup software is installed on the server or client computer, a program icon is added to the Control Panel. This icon executes the WibuKey Control Panel Applet “WibuKey Software Protection: Test and Settings”. The program shows the contents of the WibuBox (see Figure 3.1) and several options to control the WibuKey software.

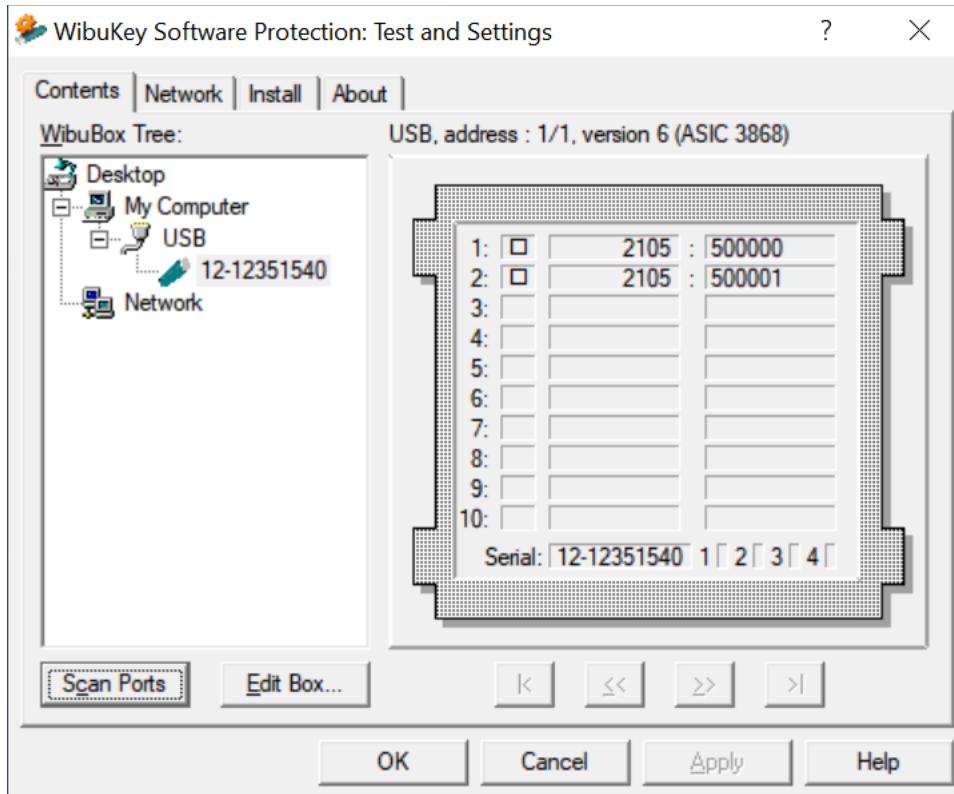


Figure 3.1 WibuKey Control Panel Applet

Normally, no special configuration changes are needed on the client side to access WkLAN. A client computer browses the local network for a suitable WkLAN server. For AAA the Network page is important. On the network page (see Figure 3.2) the default TCP/IP port 22347 can be changed, if this number conflicts with port numbers of other TCP/IP applications. Changing the port number must be done by the WibuKey Control Panel Applet at the server side and on all clients where a WkLAN server access is desired.

If no server name or address is set in the WkLAN Server Search List table, the default setting is 255.255.255.255 (LAN broadcast). The network can be searched for WkLAN accessible WibuKey Servers by the Browse button.

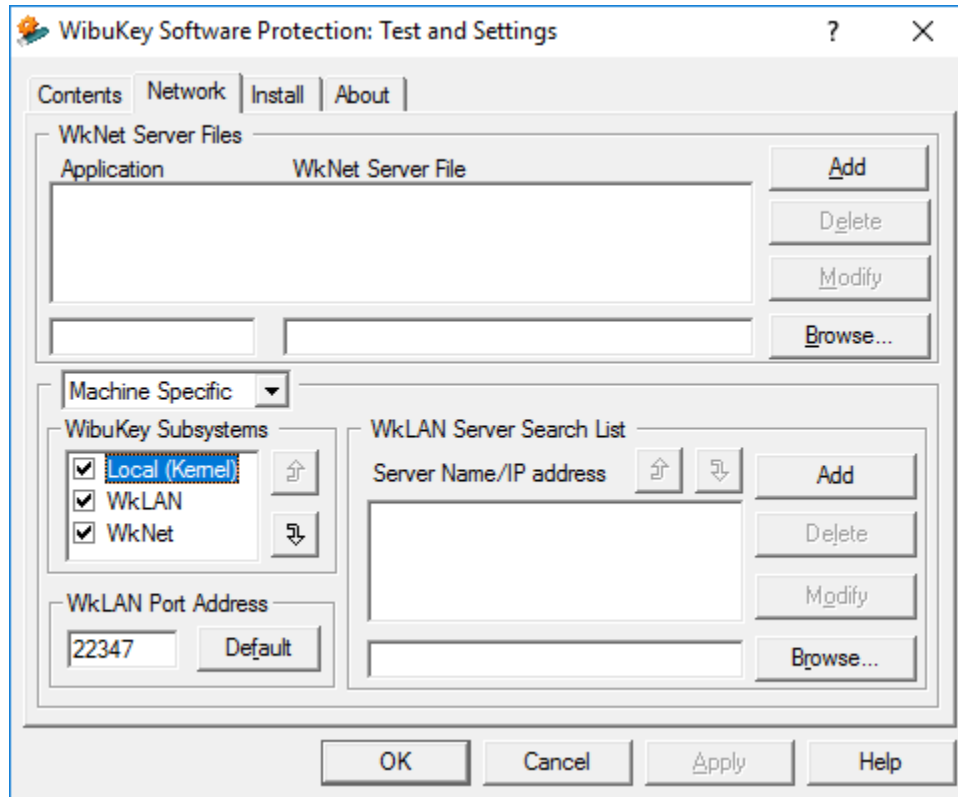


Figure 3.2 WibuKey Control Applet Network Tab

After the WibuKey Network Server has been started a status page can be displayed showing network activity (see Figure 3.3). The timeout is set to 1440 minutes (24-hour). If AAA has been started and no communication between AAA and the server is received within 24 hours, the license will be freed. The timeout can be set on the Server page of the WibuKey Control Applet.

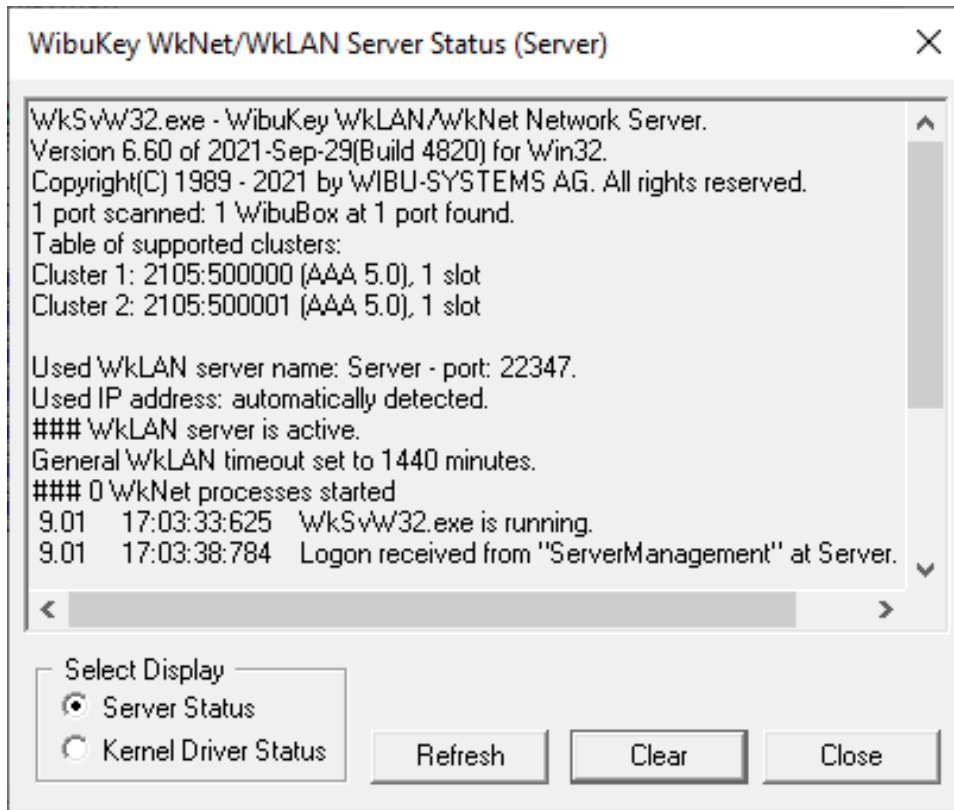


Figure 3.3 WkLAN Server Status

As part of the WibuKey Runtime installation a program (see Figure 3.4) is included to monitor AAA activities with the WibuBox.

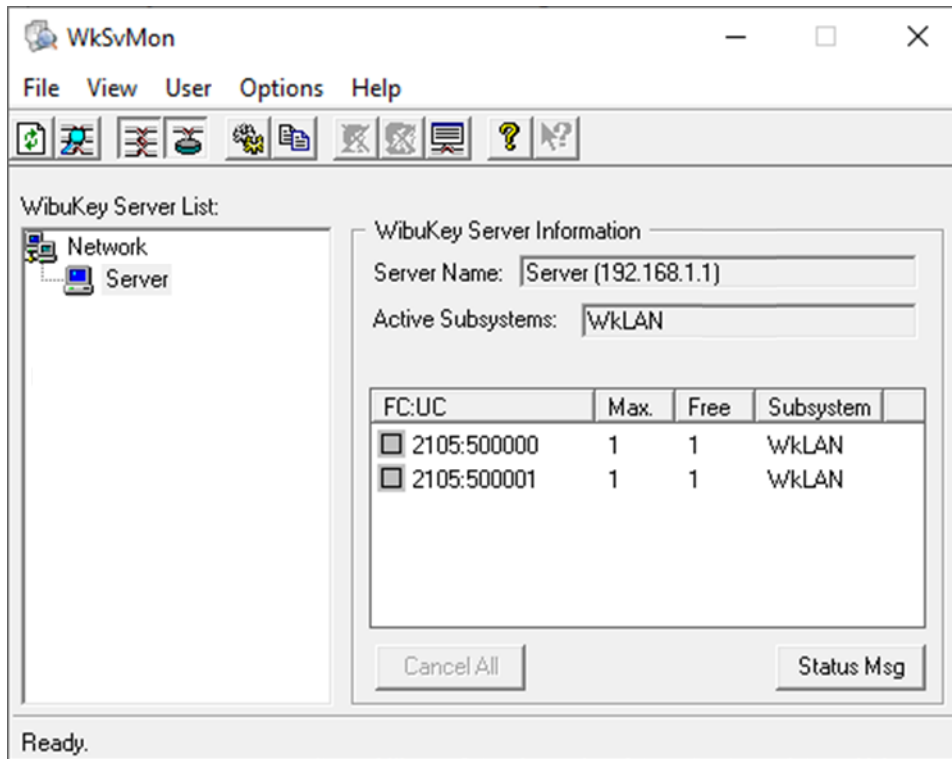


Figure 3.4 WkLAN Server Monitor

This program can be started with:

Windows Start > WibuKey > Server Monitor

The Help system of the Server Monitor explains the use of all features.

The status window of Figure 3.4 can also be displayed through the Server Monitor by selecting:

View > Server View > Select Server > Status Msg

4 Troubleshooting

The WibuKey software has an extensive help system built-in. Select the help from:

Windows Start > Programs > WibuKey > WibuKey Help

The help has an FAQ with common questions and problems. Other common problems are:

Problem: Unable to Locate DLL, the dynamic library WKWIN32.DLL could not be found.

Solution: Install the WibuKey runtime software.

Problem: WibuKey network system not available.

Solution: Check if the WibuBox is attached to the License Server. Check if the Network Server software is running.

Problem: Error in WkbAccess2: WibuKey network system not available.

Solution: Check if the WibuBox is attached to the License Server. Check if the Network Server software is running. Check if the server name/IP address is correct in the WibuKey Control Applet Network tab. Restart the WibuKey Server Windows service. Reset the server and client computer.

Problem: AAA keeps looking for a WibuBox but cannot find it.

Solution: Check if the server name/IP address is correct in the WibuKey Control Applet Network tab. Change the Server Name into the actual IP address of the License server in the WibuKey Control Applet Network page. Reset the server and client computer.

Problem: Program is Already Running.

Solution: Only one instance of the software can be run at one time. Switch to the currently running program.

Problem: Cannot Open Database Files.

Solution: When attempting to execute the software, this message indicates two possible problems:

1. Another program is already running which is using the software databases. The other program could be any other DARcorporation airplane design and analysis software. Close any DARcorporation airplane design and analysis applications that are currently running, and try to start the software again. If the message appears again and there is no other program running using the software databases, then go to number two.
2. If the software or another DARcorporation airplane design and analysis program exits abnormally due to a program or system crash, or by using Windows to kill the program, the database engine may not reset itself. This problem can occur in all versions of Windows. To reset the database engine, exit completely and restart Windows.
3. No read rights in the darcorporation\aaa50\database directory.
4. No read\write rights in the Users\LoginName\AppData\Local\Temp\working.
5. A file PDOXUSRS.NET is created by the BDE with no rights to access it. AAA does not need this file. To fix this, go to Program Files\Common Files\Borland Shared\BDE, there should be a program called bdeadmin.exe. Please run this program. Double click on drivers and select Native then select Paradox. On the right hand side it should show the properties for Paradox. Please delete the directory (pathname) listed next to NET DIR. Then save your settings and exit bdeadmin.exe. If you use the BDE for any other applications, please be sure that they still work. If you have another application that uses the BDE, instead of deleting the pathname, set the directory name to a directory the user has access rights to.

Problem: Working database or system database is read only.

Solution: If the file attributes of any files in the **Database** folder in the folder where the software is installed are set to “read only”, the program cannot execute. Refer to the Windows documentation for instructions for setting file attributes.

Problem: AAA locks up, cannot open database.

Solution: Check if the Users\LoginName\AppData\Local\Temp\working directory is empty. Delete any files in the working directory when AAA is not running.

5 Reporting Software Errors

We at DARcorporation want to know about potential errors in the software so that we may correct them as soon as possible. If you feel that you have encountered an error in the software user interface, license manager, module calculations or module calculation methods, software errors can be reported to the software support department at:

Phone: (785) 832-0434
E-mail: support@darcorp.com
Internet: www.darcorp.com
Mailing address: DARcorporation
910 E 29th St,
Lawrence, KS 66046-4926
USA