

# **FlightStream**

## **Network Floating License Installation**

### **1 Introduction**

DARcorporation uses the Wibu-Systems WibuKey Copy Protection concept for the FlightStream network licensing. The WibuKey concept consists of a WibuBox (Universal Serial Bus key) and the Wibu software.

The protection in a network is handled centrally by a WibuBox on a computer called the License Server (or WibuKey server). A WibuBox does not need to be attached to the local computer where FlightStream is started, unless the local computer is also the License Server. All computers running FlightStream must be able to access the license server. FlightStream uses the license server WkLAN (WKS VW32.EXE). On Windows 7/8.1/10 this server can be started as a system service or as an application.

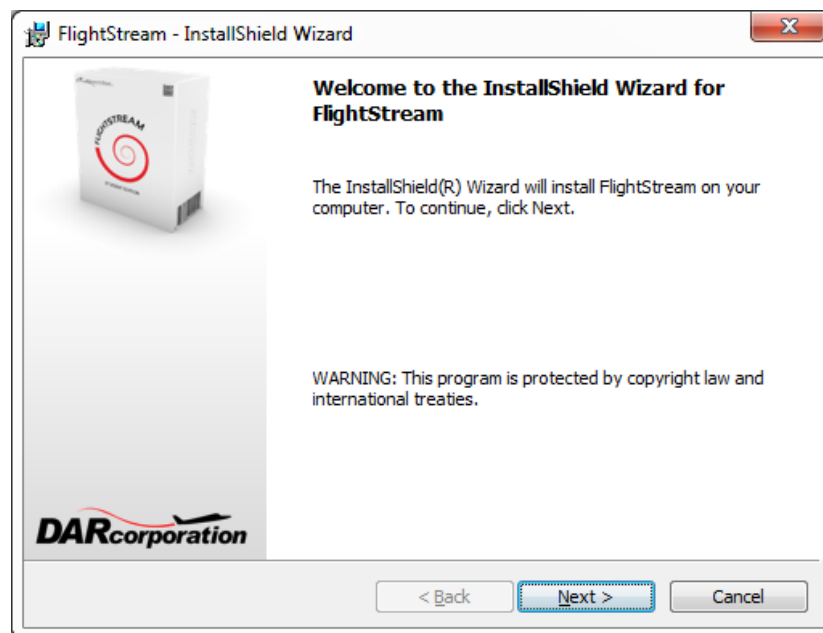
The License Server is a computer with the WibuKey software installed and is additionally running the WibuKey server process WkLAN. WkLAN is protocol based (currently TCP/IP), so it requires TCP/IP support of the network and a proper installation of TCP/IP on the server and all client machines. The client machine is a computer on which FlightStream runs. The client machine and the License Server can be the same machine if FlightStream were to run locally.

The number of licenses can be increased or decreased in a simple fashion by contacting DARcorporation. No new hardware is needed; a file can be exchanged via Internet, e-mail or disk to change the WibuBox contents.

We recommend reading through the complete document first and then following the installation steps of Section 2.

## 2 Install Procedure

- STEP 1 Close any programs that are running on the computer where the software is being installed.
- STEP 2 Choose a computer in the network to be the FlightStream license server. This can be any computer in the network. If FlightStream were to run locally only, the local computer is also the license server.
- STEP 3 Install the software from the CD (do not insert the WibuKey yet) with the installation wizard shown in Figure 2.1.



*Figure 2.1 FlightStream Installation Window*

STEP 4 Complete FlightStream installation by clicking on *Finish* button shown in Figure 2.2. WibuKey software installation will automatically continue.

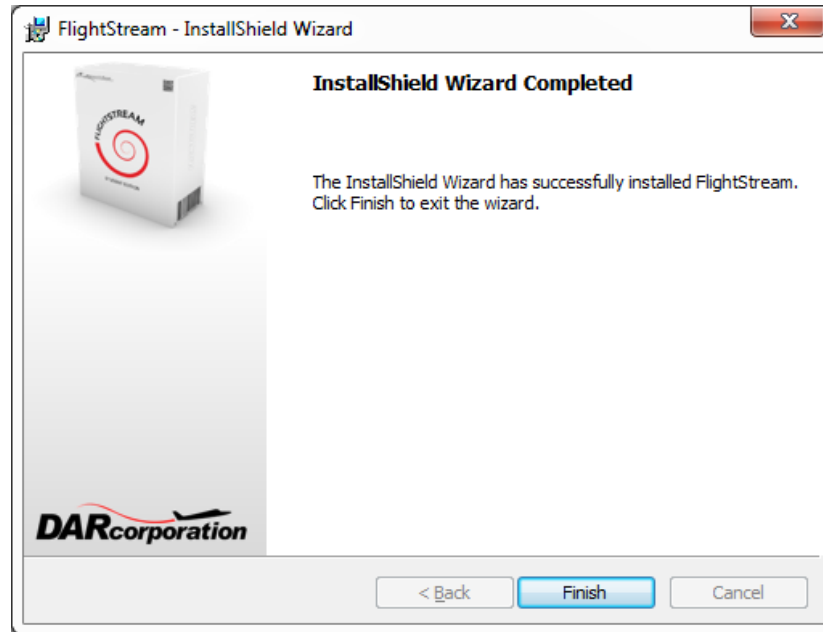


Figure 2.2 FlightStream Installation Completion

STEP 5 Proceed with WibuKey Setup and choose the following options when prompted as shown in Figure 2.3.

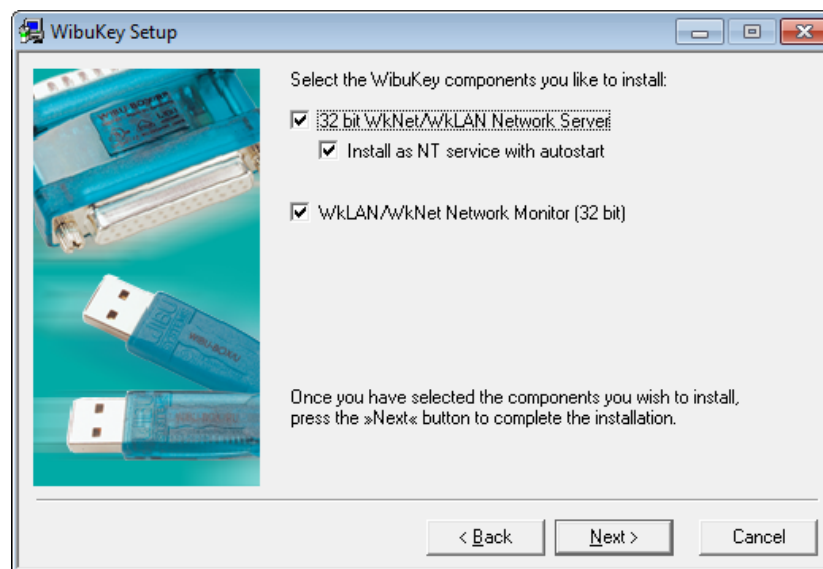


Figure 2.3 WibuKey Setup Window

**STEP 6** Insert the WibuKey in the computer that will be the License Server computer. Windows 7/8.1/10 will automatically detect the USB device as a “Plug and Play” device. If the WibuKey software has been installed, the device will be automatically installed.

**STEP 7** Install the FlightStream software and the WibuKey software on each computer in the network. On computers other than the license server, the Network server and Network Monitor options from Figure 2.3 do not need to be checked.

**STEP 8** Start the Network Server only on the license server (not on any other computers) by selecting:

Start > Programs > WibuKey > Network Server

On Windows 7/8.1/10 the server software can be installed as a service instead of running as a user program. It will start up automatically after rebooting the computer. If you run the server as an application you can set it into the taskbar by right clicking on the icon after you started the server.

**STEP 9** Start FlightStream on any computer in the network.

### 3 WibuKey Software

When the WibuKey Runtime software is installed on the server or client computer, a program icon is added to the Control Panel. This icon executes the WibuKey Control Panel Applet “WibuKey Software Protection: Test and Settings”.

The program shows the contents of the WibuKey (see Figure 3.1) and several options to control the WibuKey software.

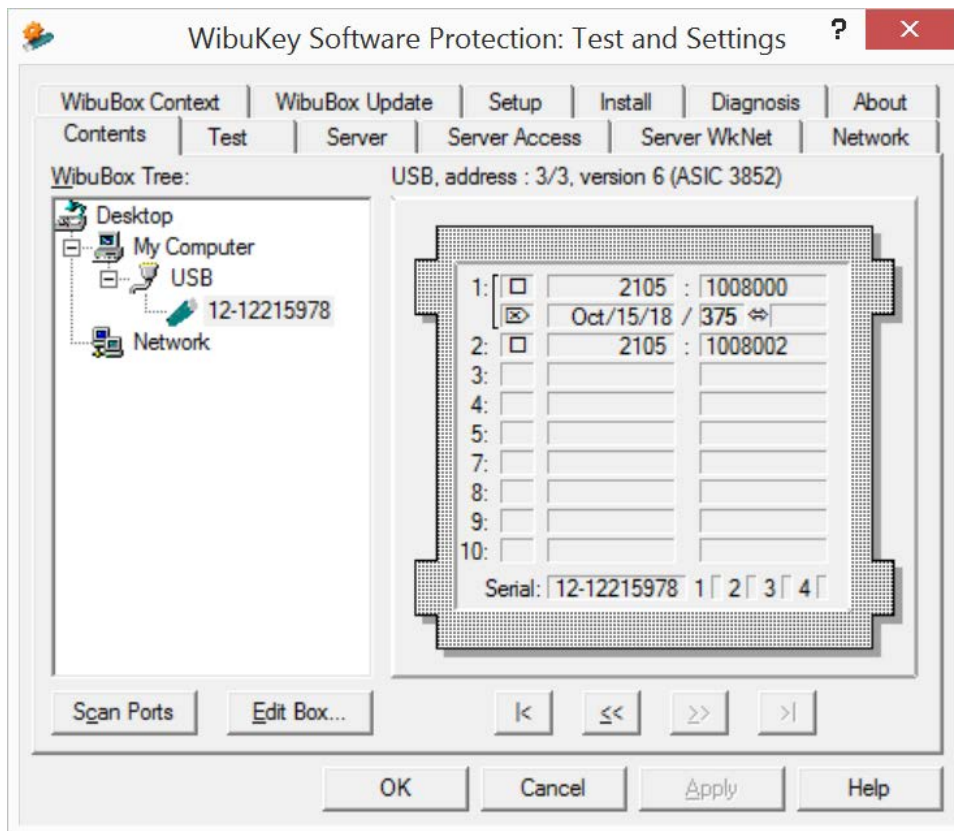


Figure 3.1 WibuKey Control Panel Applet

Normally, no special configuration changes are needed on the client side to access WkLAN. A client computer browses the local network for a suitable WkLAN server. For FlightStream the Network page is important. On the network page (see Figure 3.2) the default TCP/IP port 22347 can be changed, if this number conflicts with port numbers of other TCP/IP applications. Changing the port number must be done by the WibuKey Control Panel Applet at the server side and on all clients where a WkLAN server access is desired.

If no server name or address is set in the WkLAN Server Search List table, the default setting is 255.255.255.255 (LAN broadcast). The network can be searched for WkLAN accessible WibuKey Servers by the browse button.

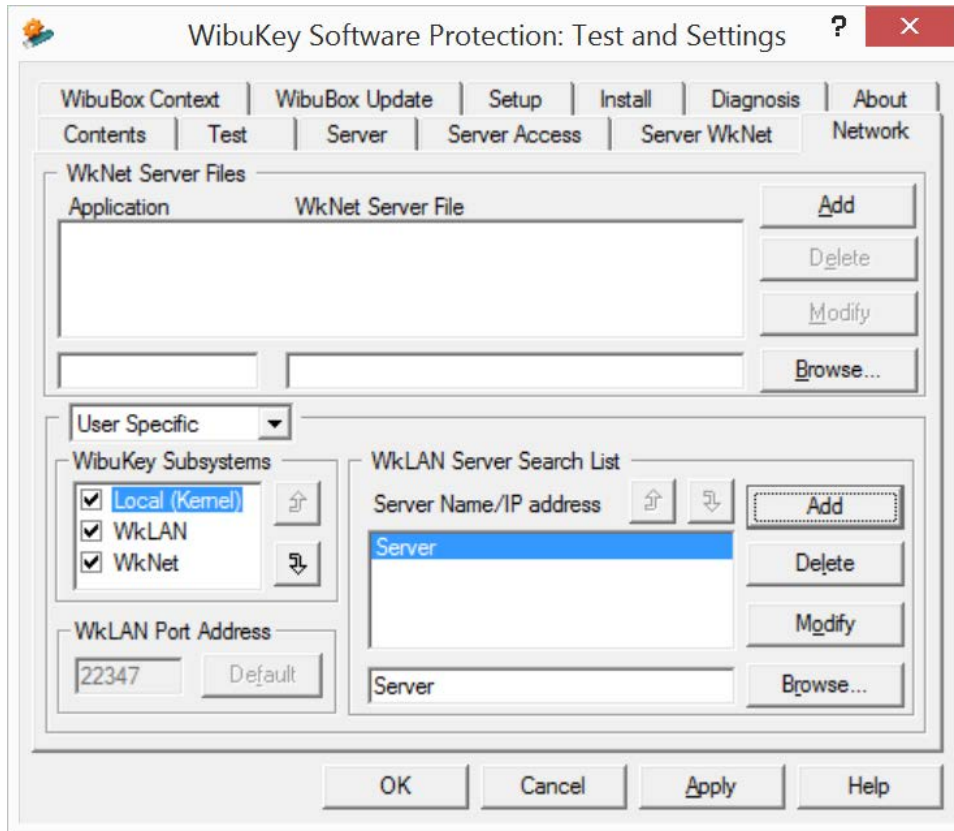
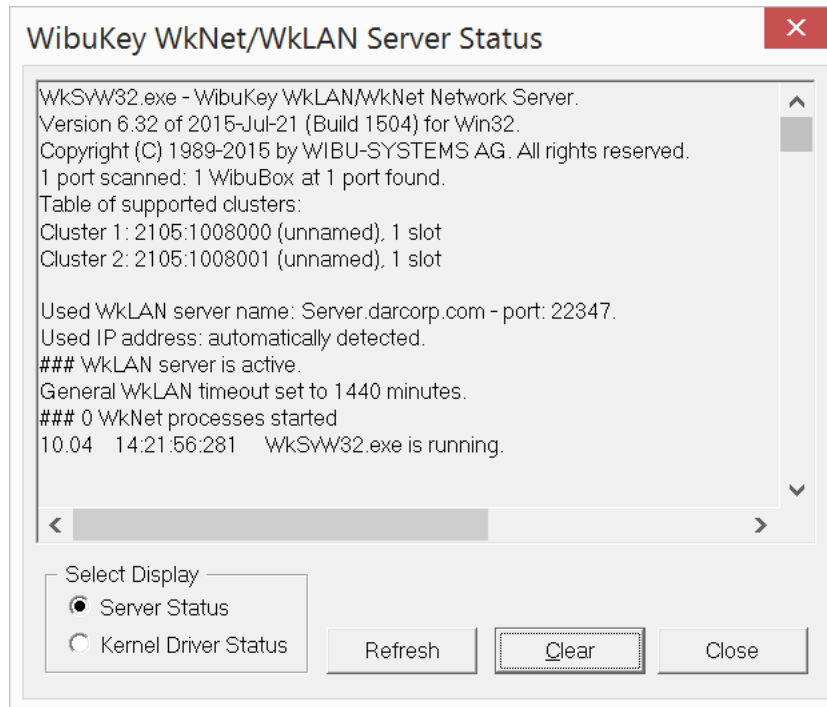


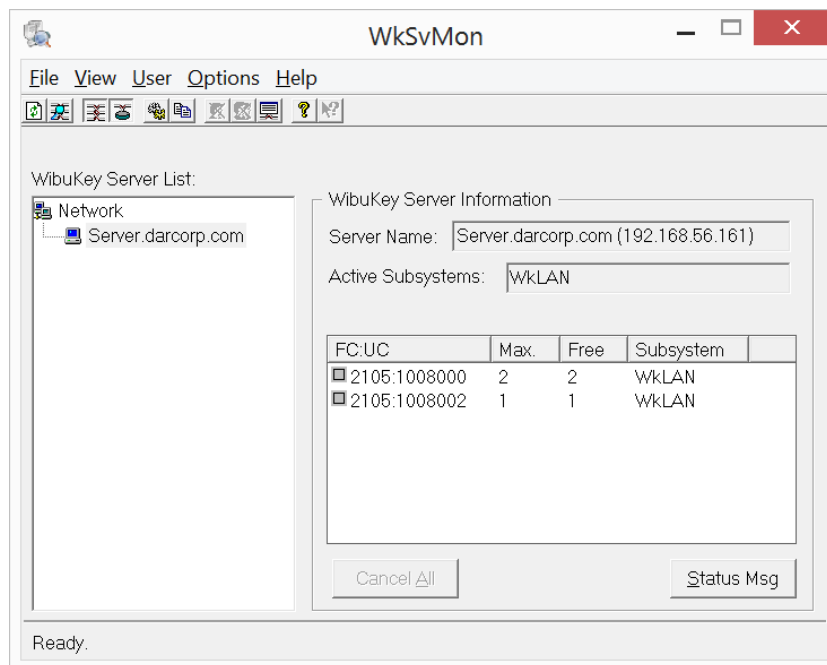
Figure 3.2 WibuKey Control Applet Network Page

After the WibuKey Network Server has been started, a status page can be displayed showing network activity (see Figure 3.3). The timeout is set to 1440 minutes. If FlightStream has been started and no communication between FlightStream and the server has been received in 24 hours, the license will be freed. The timeout can be set on the Server page of the WibuKey Control Applet.



*Figure 3.3 WkLAN Server Status*

As part of the WibuKey Runtime installation a program (see Figure 3.4) is included to monitor FlightStream activities with the WibuKey.



*Figure 3.4 WkLAN Server Monitor*

This program can be started with:

Start > Programs > WibuKey > Server Monitor

The Help system of the Server Monitor explains the use of all features.

The status window of Figure 3.4 can also be displayed through the Server Monitor by selecting:

View > Server View > Select Server > Status Msg

## 4 Troubleshooting

The WibuKey software has an extensive help system built-in. Select the help from:

Start > Programs > WibuKey > WibuKey Help

The help has an FAQ with common questions and problems. Other common problems are:

**Problem:** Unable to Locate DLL, the dynamic library WKWIN32.DLL could not be found

**Solution:** install the WibuKey runtime software

**Problem:** WibuKey network system not available

**Solution:** Check if the WibuKey is attached to the License Server

Check if the Network Server software is running

**Problem:** FlightStream keeps looking for a WibuBox but cannot find it.

**Solution:** Check if the server name/IP address is correct in the WibuKey Control Applet Network page. Change the Server Name into the actual IP address of the License server in the WibuKey Control Applet Network page. Reset the server and client computer



## **5 Reporting Software Errors**

We at DARcorporation want to know about potential errors in the software so that we may correct them as soon as possible. If you feel that you have encountered an error in the software user interface, license manager, module calculations or module calculation methods, software errors can be reported to the software support department at:

Phone: (785) 832-0434  
E-mail: [support@darcorp.com](mailto:support@darcorp.com)  
Internet: [www.darcorp.com](http://www.darcorp.com)