

FAR 23 LOADS 6.0

Network Floating License Installation

1 Introduction

DARcorporation uses the WIBU-Systems WIBU-KEY Copy Protection concept for the FAR 23 LOADS network licensing. The WIBU-KEY concept consists of a WIBU-BOX (Universal Serial Bus key) and the WIBU software.

The protection in a network is handled centrally by a WIBU-BOX on a computer called the License Server (or WIBU-KEY server). A WIBU-BOX does not need to be attached to the local computer where FAR 23 LOADS is started, unless the local computer is also the License Server. All computers running FAR 23 LOADS must be able to access the license server. FAR 23 LOADS uses the license server WKLAN (WKS VW32.EXE). On Windows 7/8/8.1/10 this server can be started as a system service or as an application.

The License Server is a computer with the WIBU-KEY software installed and is additionally running the WIBU-KEY server process WKLAN. WKLAN is protocol based (currently TCP/IP), so it requires TCP/IP support of the network and a proper installation of TCP/IP on the server and all client machines. The client machine is a computer on which FAR 23 LOADS runs. The client machine and the License Server can be the same machine if FAR 23 LOADS were to run locally.

The number of licenses can be increased or decreased in a simple fashion by contacting DARcorporation. No new hardware is needed; a file can be exchanged via Internet, e-mail or disk to change the WIBU-BOX contents.

We recommend reading through the complete document first and then following the installation steps of Section 2.

2 Install Procedure

- STEP 1 Close any programs that are running on the computer where the software is being installed.
- STEP 2 Choose a computer in the network to be the FAR 23 LOADS license server. This can be any computer in the network. If FAR 23 LOADS were to run locally only, the local computer is also the license server.
- STEP 3 Install the software from the CD (do not insert the WIBU-BOX yet).

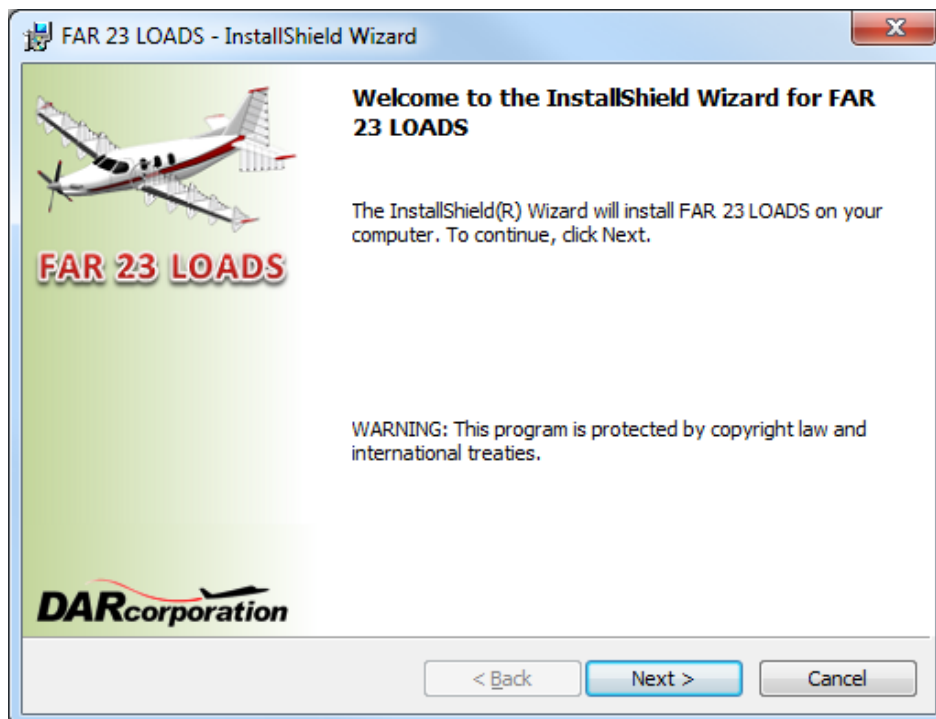


Figure 2.1 FAR 23 LOADS Installation Window

STEP 4 Choose the following options from Figure 2.2 for the WIBU software.

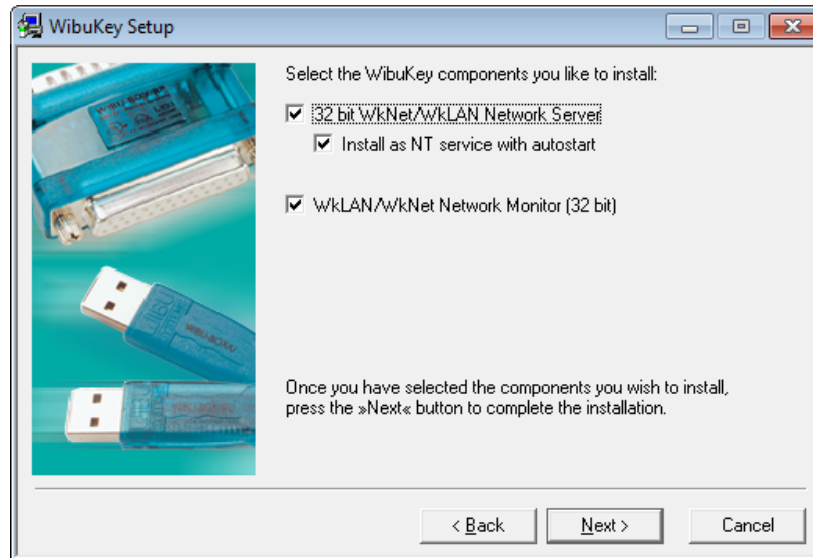


Figure 2.2 WIBU-KEY Setup Window

STEP 5 SmartShelter PDR Reader must be installed to read FAR 23 LOADS manual PDF. Choose “Typical” for the setup type to continue the installation as shown in Figure 2.3.

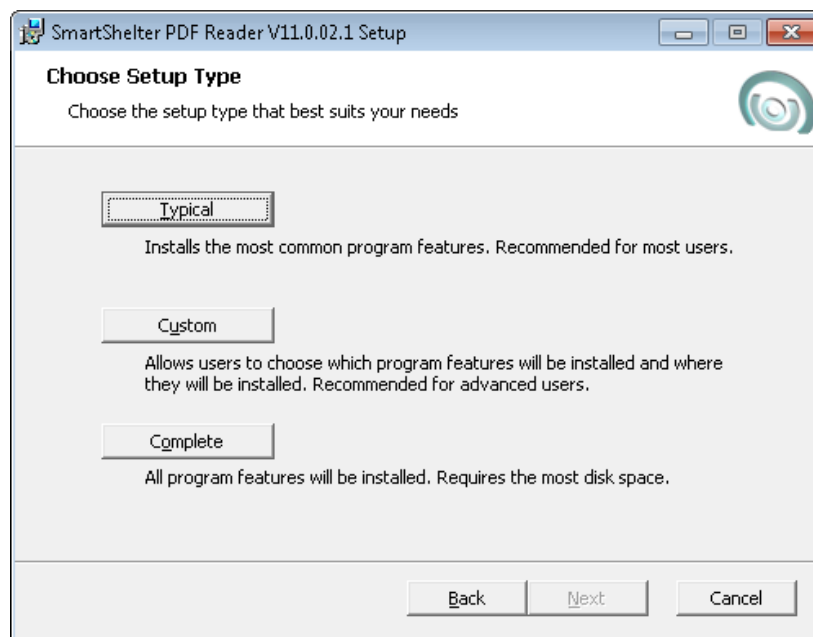


Figure 2.3 WIBU-KEY Setup Window

STEP 6 Insert the WIBU-BOX in the computer that will be the License Server computer. Windows 7/8/8.1/10 will automatically detect the USB device as a “Plug and Play” device. If the WIBU Key software has been installed, the device will be automatically installed.

STEP 7 Install the FAR 23 LOADS software and the WIBU Runtime on each computer in the network. On computers other than the license server, the Network server and Network Monitor options from Figure 2.2 do not need to be checked.

STEP 8 Start the Network Server only on the license server (not on any other computers) by selecting:

Start > Programs > WIBU-KEY > Network Server

On Windows 7/8/8.1/10 the server software can be installed as a service instead of running as a user program. It will start up automatically after rebooting the computer. If you run the server as an application you can set it into the taskbar by right clicking on the icon after you started the server.

STEP 9 Install and start FAR 23 LOADS on any computer in the network.

3 WIBU KEY Software

When the WIBU-KEY Runtime software is installed on the server or client computer, a program icon is added to the Control Panel. This icon executes the WIBU-KEY Control Panel Applet “WIBU-KEY Software Protection: Test and Settings”.

The program shows the contents of the WIBU-BOX (see Figure 3.1) and several options to control the WIBU-KEY software.

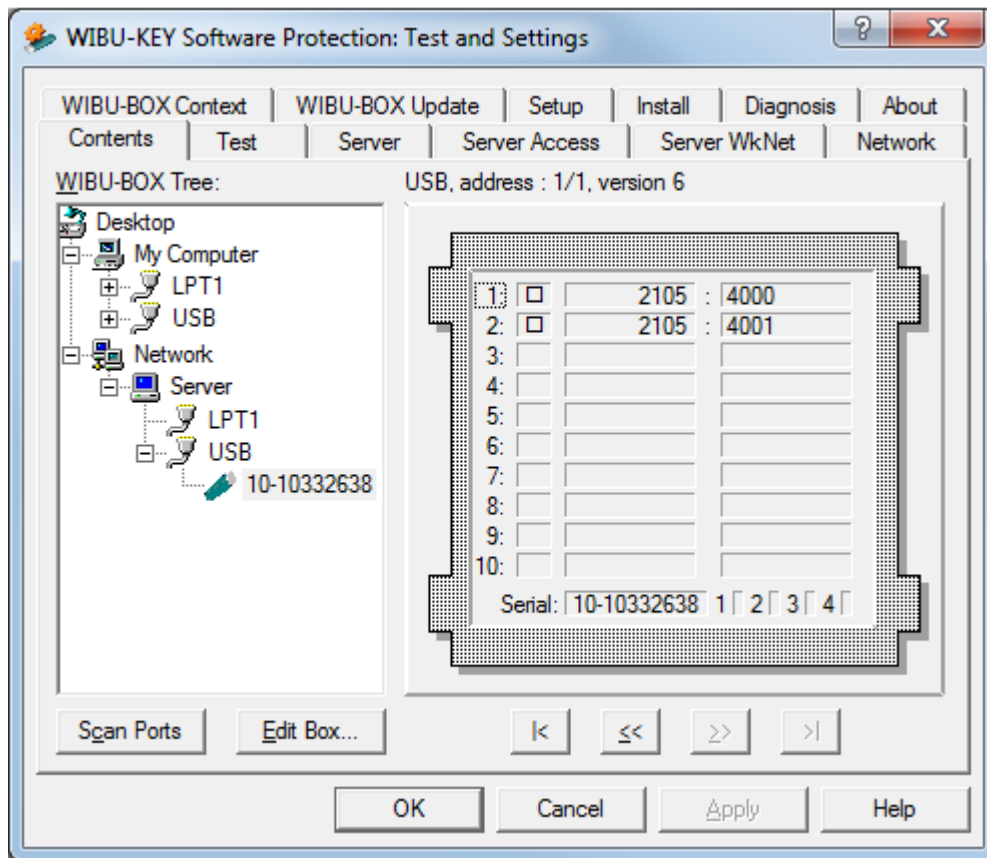


Figure 3.1 WIBU-KEY Control Panel Applet

Normally, no special configuration changes are needed on the client side to access WKLAN. A client computer browses the local network for a suitable WKLAN server. For FAR 23 LOADS the Network page is important. On the network page (see Figure 3.2) the default TCP/IP port 22347 can be changed, if this number conflicts with port numbers of other TCP/IP applications. Changing the port number must be done by the WIBU-KEY Control Panel Applet at the server

side and on all clients where a WKLAN server access is desired.

If no server name or address is set in the WKLAN Server Search List table, the default setting is 255.255.255.255 (LAN broadcast). The network can be searched for WKLAN accessible WIBU-KEY Servers by the browse button.

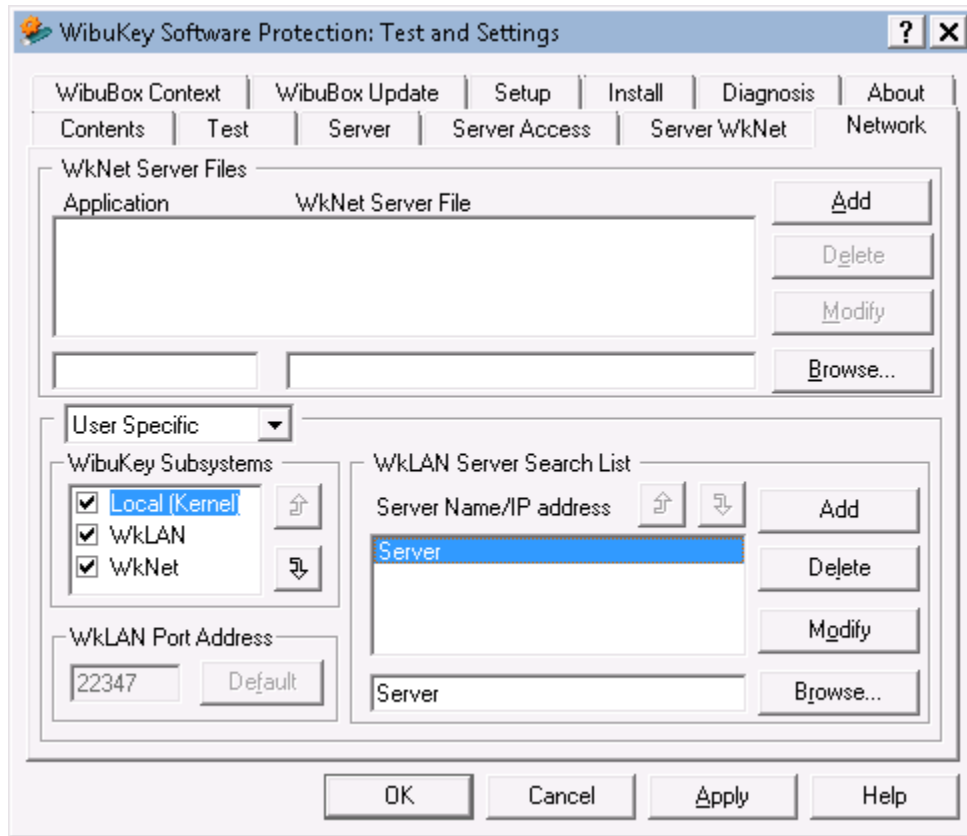


Figure 3.2 WIBU-KEY Control Applet Network Page

After the WIBU-KEY Network Server has been started a status page can be displayed showing network activity (see Figure 3.3). The timeout is set to 1440 minutes. If FAR 23 LOADS has been started and no communication between FAR 23 LOADS and the server has been received in 24 hours, the license will be freed. The timeout can be set on the Server page of the WIBU-KEY Control Applet.

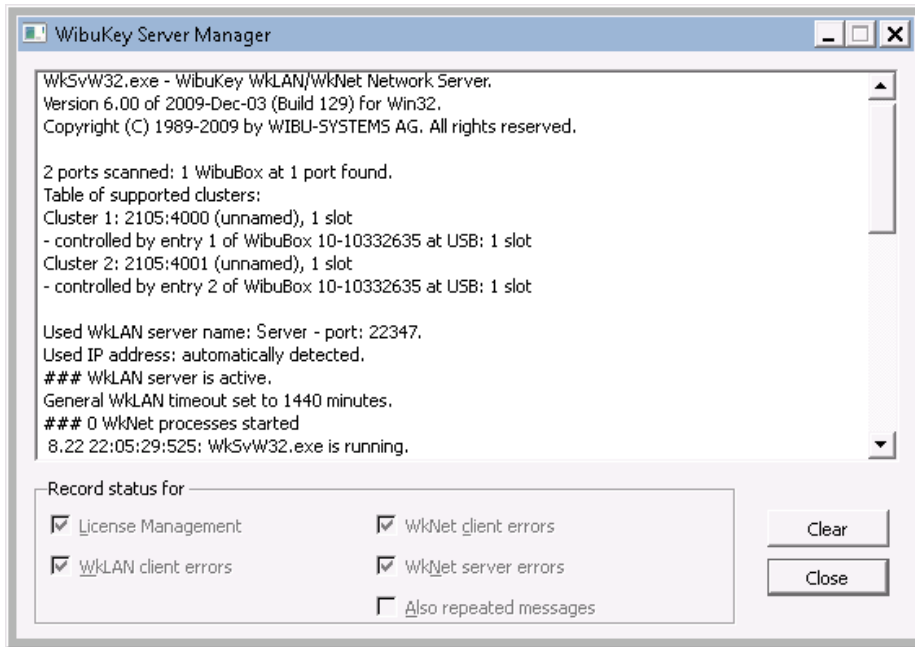


Figure 3.3 WkLAN Server Status

As part of the WIBU-KEY Runtime installation a program (see Figure 3.4) is included to monitor FAR 23 LOADS activities with the WIBU-BOX.

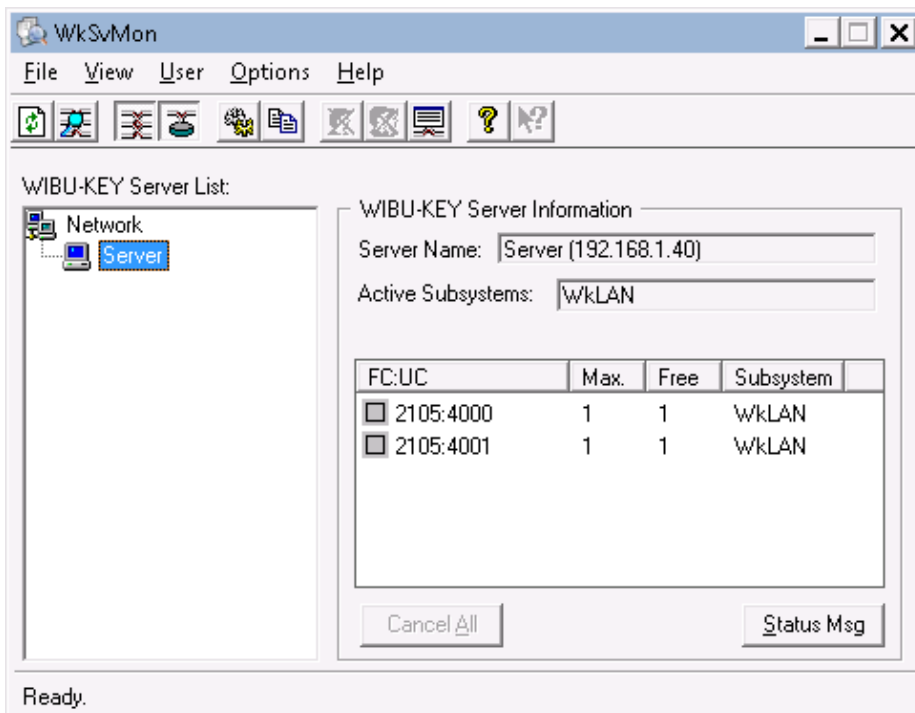


Figure 3.4 WkLAN Server Monitor

This program can be started with:

Start > Programs > WIBU-KEY > Server Monitor

The Help system of the Server Monitor explains the use of all features.

The status window of Figure 3.4 can also be displayed through the Server Monitor by selecting:

View > Server View > Select Server > Status Msg

4 Troubleshooting

The WIBU-KEY software has an extensive help system built-in. Select the help from:

Start > Programs > WIBU-KEY > WIBU-KEY Help

The help has an FAQ with common questions and problems. Other common problems are:

Problem: Unable to Locate DLL, the dynamic library WKWIN32.DLL could not be found

Solution: install the WIBU-KEY runtime software

Problem: WIBU-KEY network system not available

Solution: Check if the WIBU-BOX is attached to the License Server

Check if the Network Server software is running

Problem: FAR 23 LOADS keeps looking for a WIBU-BOX but cannot find it.

Solution: Check if the server name/IP address is correct in the WIBU-KEY Control Applet Network page. Change the Server Name into the actual IP address of the License server in the WIBU-KEY Control Applet Network page. Reset the server and client computer

5 Reporting Software Errors

We at DARcorporation want to know about potential errors in the software so that we may correct them as soon as possible. If you feel that you have encountered an error in the software user interface, license manager, module calculations or module calculation methods, software errors can be reported to the software support department at:

Phone: (785) 832-0434
E-mail: support@darcorp.com
Internet: www.darcorp.com