

# Advanced Aircraft Analysis 3.3

## Node Locked License Upgrade Installation

### 1 Introduction

DARcorporation uses the WIBU-Systems WIBU-KEY Copy Protection concept for the AAA licensing. The WIBU-KEY concept consists of a WIBU-BOX and the WIBU software.

A WIBU-BOX must be attached to the local computer where AAA is started. The software protection is handled by a WIBU-BOX.

We recommend reading through the complete document first and then following the installation steps of Section 2.

### 2 Install Procedure

You must have administrative rights to complete the following steps. Installing the software consists of the following steps:

**STEP 1** Close any programs that are running on the computer where the software is being installed. It is strongly recommended uninstalling old versions of AAA first on all computers.

**STEP 2** Insert CD into the CD-ROM drive.

**STEP 3** If the installation does not start automatically: select run from the Start Menu. In the Run dialog, type: `X:\cdsetup` (where X is the letter of the CD-ROM drive) and click **OK**. Figure 2.1 shows the setup window.



*Figure 2.1 AAA Setup Window*

- STEP 4      Click on “Install AAA” to install AAA first. Follow the instructions on the screen from the installation program. It is strongly suggested that the program be installed in the recommended directory.
- STEP 5      At the end of the installation, the dialog window in Figure 2.2 will be displayed requesting information used to set up the software configuration.

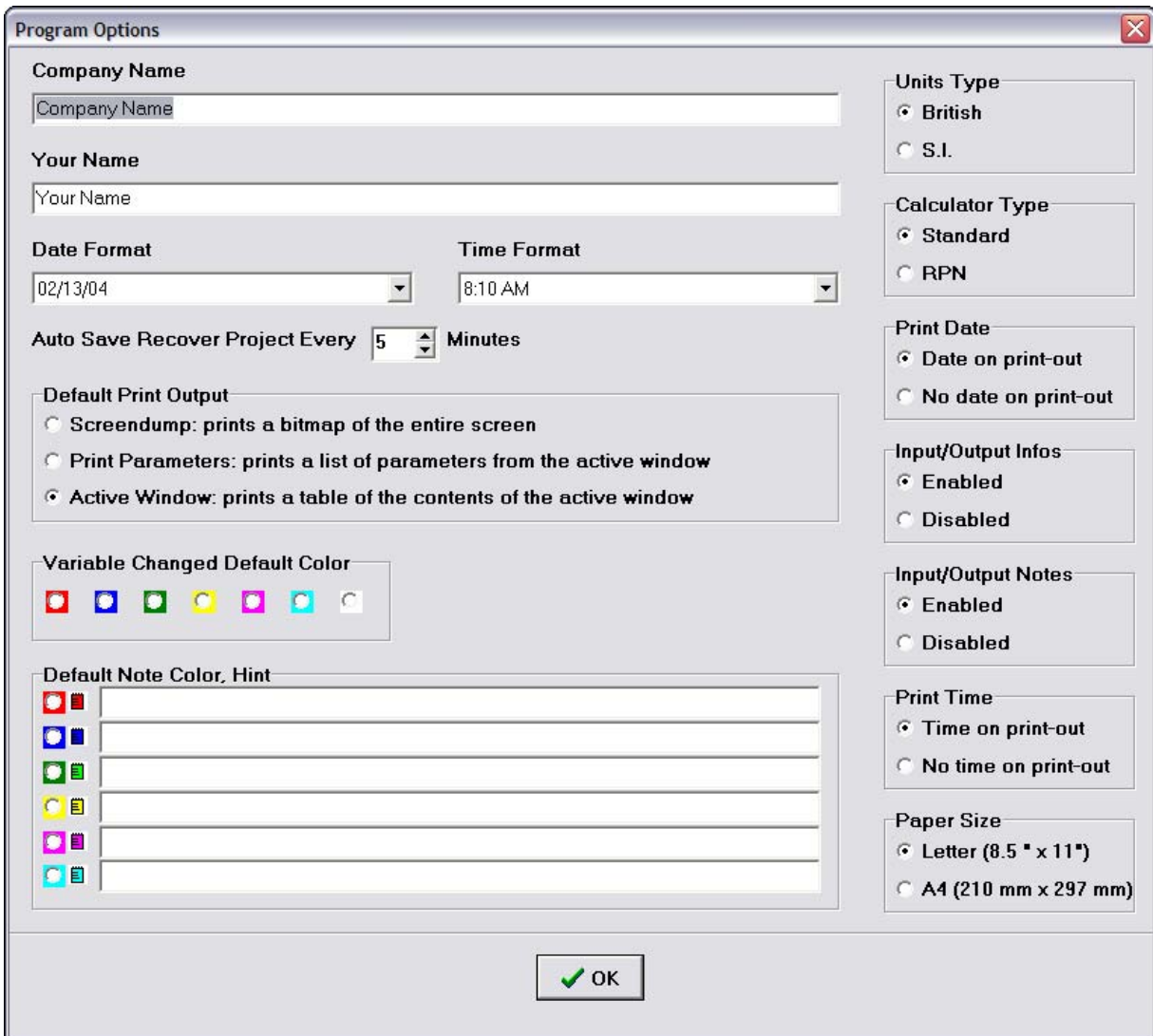


Figure 2.2 Program Options Window

The following information is requested:

- **Company name:** This name will be displayed in the statusbar while running the software.
- **Your Name:** The name will be saved in the software configuration file.
- **Date Format:** Default format of date displayed on statusbar.
- **Time Format:** Default format of time displayed on statusbar.
- **Units Type:** The software supports both S.I. and British units.
- **Calculator Type:** The software calculator supports standard and RPN

AAA Node Locked Upgrade Installation

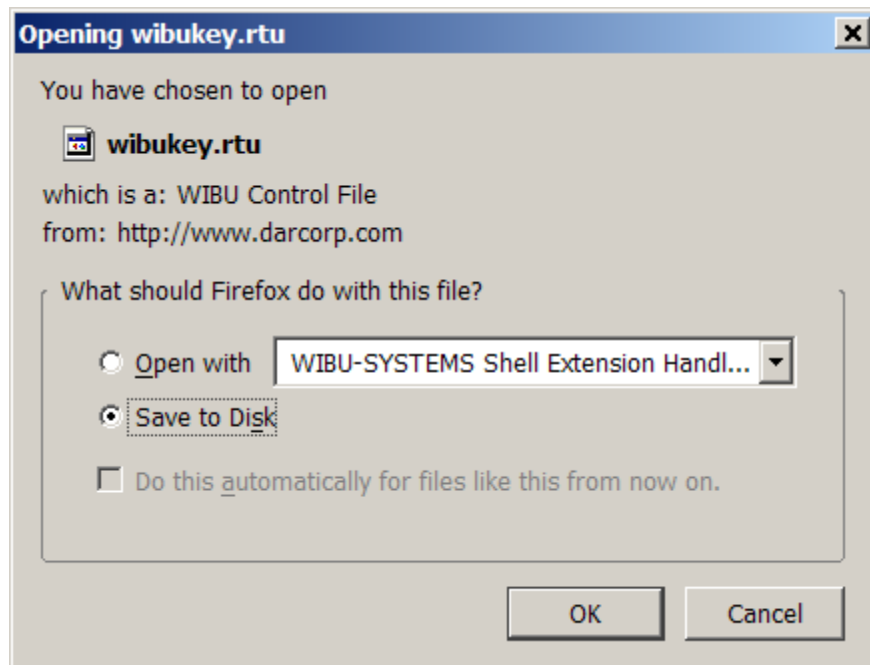
mode.

- **Print Date:** The date can be displayed on each printout.
- **Input/Output Infos:** A button can be displayed on each input/output element allowing the user to directly access help about that info. Default is 'enabled'.
- **Input/Output Notes:** A button can be displayed on each input/output element allowing the user to keep notes about the parameter. Default is 'enabled'.
- **Print Time:** The print time can be displayed on each printout.
- **Paper Size:** Specify the paper size for printouts.
- **Auto Save Recovery:** Specify the time interval for auto save.
- **Variable Change Color:** Specify the default color to display with calculated values change.
- **Default Note Color:** Specify the color of a note, and a description of what the note color represents.
- **Default Printer Output:** The default hardcopy output type can be defined (see AAA 3.3 User's Manual, Part II Chapter 4).

After clicking the OK button on the Program Options screen, the Registration Form on [www.darcorp.com](http://www.darcorp.com) will be opened.

For Vista operating system, a Microsoft patch for the Help system is need because Vista does not support the original help files. The patch can be downloaded from <http://www.microsoft.com/downloads/details.aspx?familyid=6EBCFAD9-D3F5-4365-8070-334CD175D4BB&displaylang=en>. For Windows 7 operating system, a Microsoft patch for the Help system is need because Windows 7 does not support the original help files. The patch can be downloaded from <http://www.microsoft.com/downloads/en/details.aspx?FamilyID=258aa5ec-e3d9-4228-8844-008e02b32a2c&displaylang=en>.

STEP 6 Start AAA 3.3 after the installation is completed. A message will show up indicating the WIBU-BOX is for a previous version. You can download an updated wibukey.rtu file from the [www.darcorp.com](http://www.darcorp.com) website automatically (see figure 2.3) or obtain one through [support@darcorp.com](mailto:support@darcorp.com) if your computer is not connected to the Internet. Save this file to a temporary location.



*Figure 2.3 Download rtu File*

STEP 7 Exit AAA 3.3

STEP 8 Start the WIBU-KEY Applet “WIBU-KEY Software Protection: Test and Settings”. The applet can be found in Control Panel (Figure 2.4)

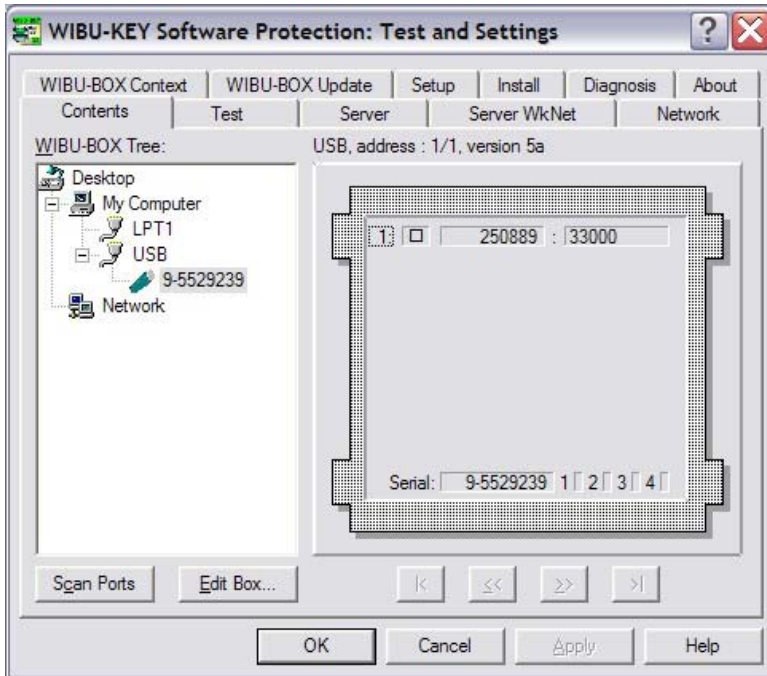


Figure 2.4 WIBU-KEY Control Panel Applet

STEP 11 Select the WIBU-BOX Update tab (See Figure 2.5).

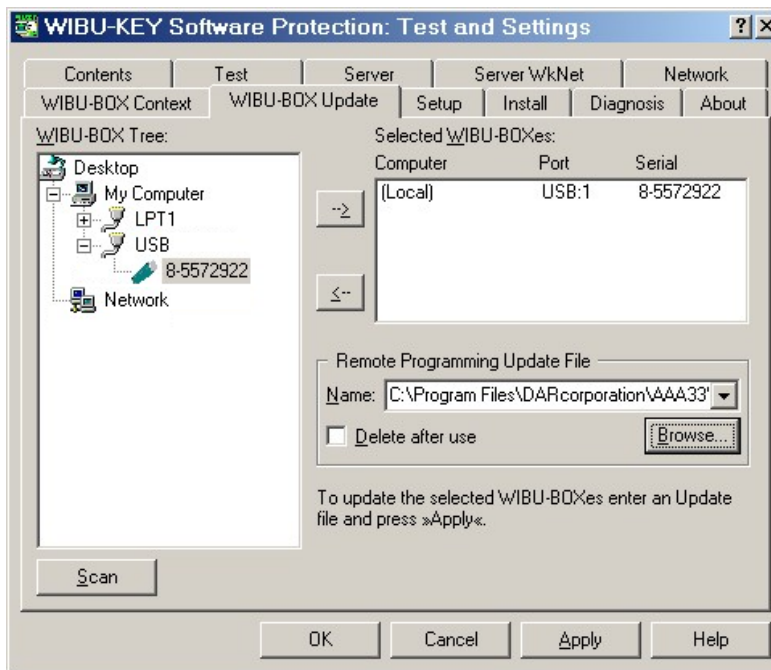


Figure 2.5 WIBU-KEY Control Panel Applet, Update Tab

STEP 12 Select the Browse button in the “Remote Programming Update File” section. Goto the temporary directory of STEP 6 and select wibukey.rtu (see Figure 2.6). Select Open.

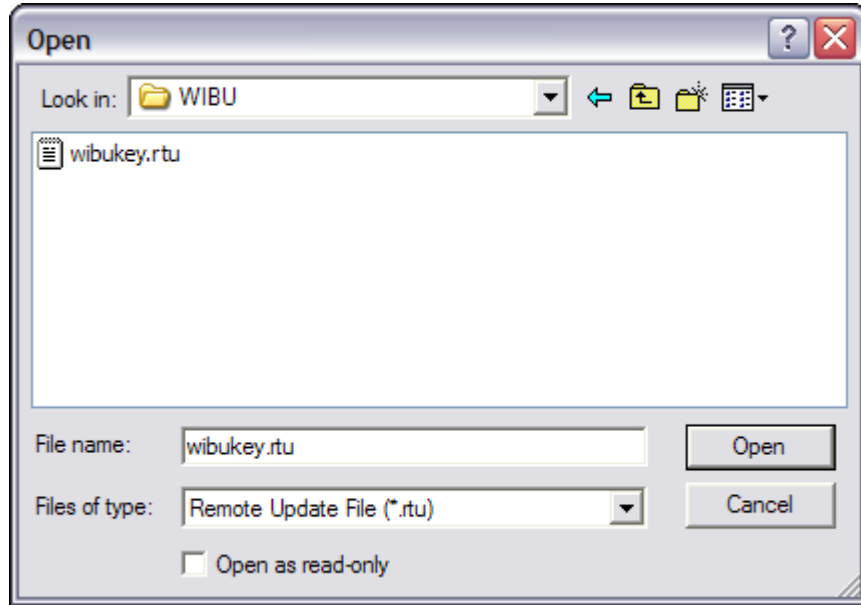


Figure 2.6 WIBU-Remote Update File

STEP 13 Select the Apply button. A message will show up indicating the update was successful (see Figure 2.7).

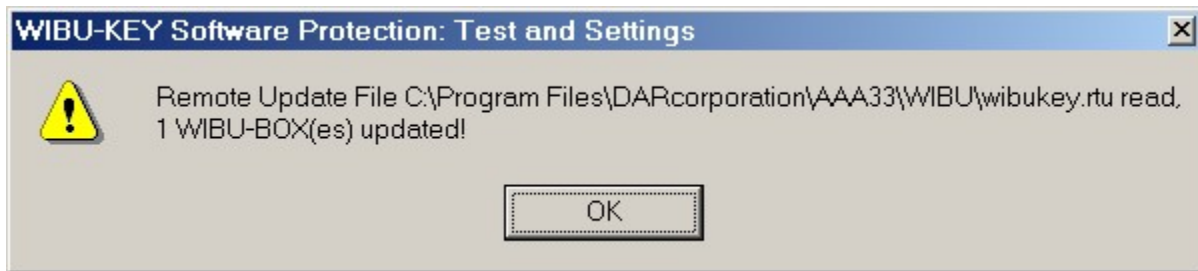
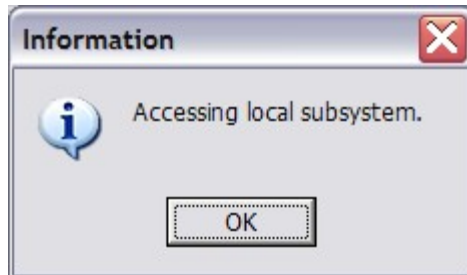


Figure 2.7 WIBU-Remote Update

Selecting the Contents tab on the Control Panel Applet should show the updated WIBU box contents. The first line of the WIBU-BOX is always 250889:3300 for AAA version 3.3. If the first entry shows 250889:310, 250889:3200 the update was not successful.

STEP 14 Start AAA. A window will show up when the connection to the WIBU-BOX was successful (See Figure 2.8).



*Figure 2.8 AAA Startup Screen*

After clicking OK, AAA will open.

Note: AAA uses a working directory to create temporary working files. This directory is normally Program Files\DARcorporation\AAA33\Working. To use another directory than the default, change the shortcut to AAA on the Desktop from:

aaa33.exe to aaa33.exe "%1" "new working directory location\working"

Be sure to include the %1 and to include the directory name working.

### 3 WIBU KEY Software

When the WIBU-KEY Runtime software is installed on the computer, a program



icon is added to the Control Panel. This icon executes the WIBU-KEY Control Panel Applet “WIBU-KEY Software Protection: Test and Settings”.

The program shows the contents of the WIBU-BOX (see Figure 3.1) and several options to control the WIBU-KEY software.

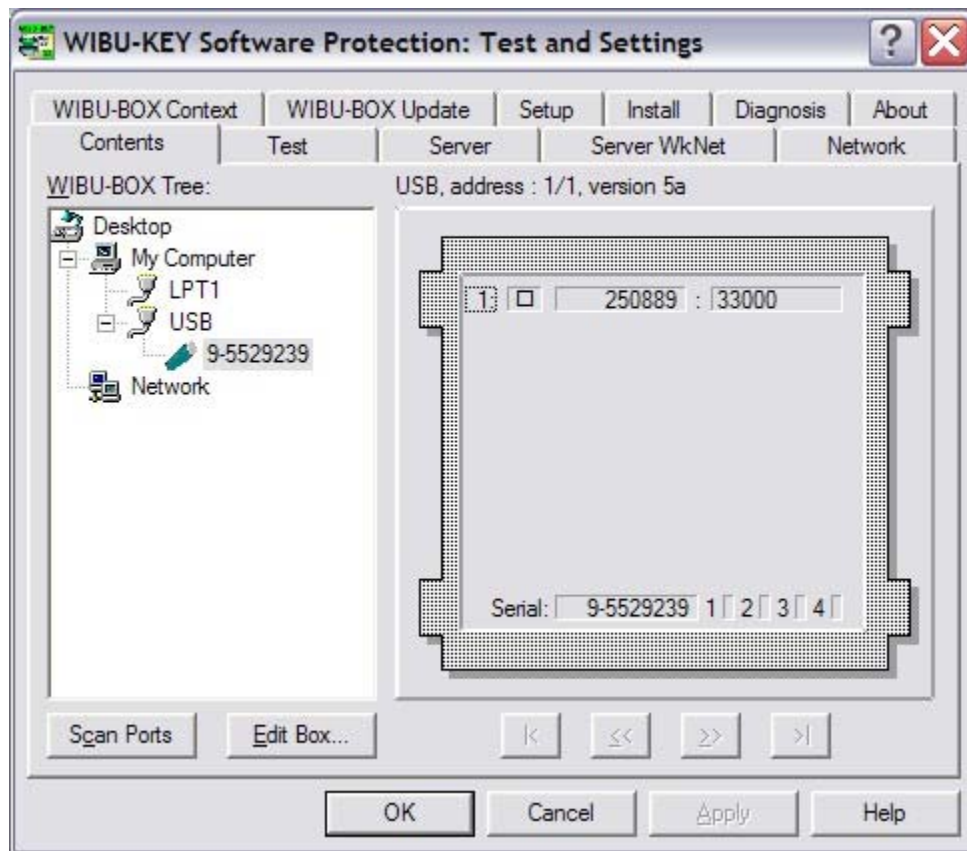


Figure 3.1 WIBU-KEY Control Panel Applet

Normally, no special configuration changes are needed.

## 4 Troubleshooting

The WIBU-KEY software has an extensive help system built-in. Select the help from:

Start > Programs > WIBU-KEY > WIBU-KEY Help

The help has an FAQ with common questions and problems. Other common problems are:

**Problem:** Unable to Locate DLL, the dynamic library WKWIN32.DLL could not be found

**Solution:** install the WIBU-KEY runtime software

**Problem:** Program is Already Running.

**Solution:** Only one instance of the software can be run at one time. Switch to the currently running program.

**Problem:** Cannot Open Database Files.

**Solution:** When attempting to execute the software, this message indicates two possible problems:

1. Another program is already running which is using the software databases. The other program could be any other DARcorporation airplane design and analysis software. Close any DARcorporation airplane design and analysis applications that are currently running, and try to start the software again. If the message appears again and there are no other programs running using the software databases, then go to number two.
2. If the software or another DARcorporation airplane design and analysis program exits abnormally due to a program or system crash, or by using Windows to kill the program, the database engine may not reset itself. This problem can occur in all versions of Windows. To reset the database engine, exit completely and restart Windows.
3. No read rights in the darcorporation\aaa33\database directory.
4. No read\write rights in the darcorporation\aaa33\working directory.
5. A file PDOXUSRS.NET is created by the BDE with no rights to access it. AAA does not need this file. To fix this, go to Program Files\Common

Files\Borland Shared\BDE, there should be a program called bheadmin.exe. Please run this program. Double click on drivers and select Native then select Paradox. On the right hand side it should show the properties for Paradox. Please delete the directory (pathname) listed next to NET DIR. Then save your settings and exit bheadmin.exe. If you use the BDE for any other applications, please be sure that they still work. If you have another application that uses the BDE, instead of deleting the pathname, set the directory name to a directory the user has access rights to.

**Problem:** Working database or system database is read only.

**Solution:** If the file attributes of any files in the **Database** folder in the folder where the software is installed are set to “read only”, the program cannot execute. Refer to the Windows documentation for instructions for setting file attributes.

**Problem:** AAA locks up, cannot open database.

**Solution:** Check if the DARcorporation\aaa33\Working directory is empty. Delete any files in the working directory when AAA is not running.

## 5 Reporting Software Errors

We at DARcorporation want to know about potential errors in the software so that we may correct them as soon as possible. If you feel that you have encountered an error in the software user interface, license manager, module calculations or module calculation methods, software errors can be reported to the software support department at:

Phone: (785) 832-0434  
Fax: (785) 832-0524  
E-mail: support@darcorp.com  
Internet: www.darcorp.com